

34TH ANNUAL WINTER CONCERT

BE OF GOOD CHEER!



Mairee Pantzer, Artistic Director

Sunday,
December 6, 2009

3:00 pm

Gordon Center for the
Performing Arts

3506 Gwynnbrook Avenue
Owings Mills

Save the Date!



6th Annual Family Fundraiser

Sunday, May 2, 2010

12 pm - 5 pm

Port Discovery Children's Museum

Bring the whole family for a fun-filled day of special programs, food, and live entertainment!

All proceeds benefit Port Discovery's *School and Family Access Programs*, which provide free or reduced admission for children and their caregivers from our economically disadvantaged communities.

PORT DISCOVERY
Children's Museum

35 Market Place • Inner Harbor • portdiscovery.org

BE OF GOOD CHEER!

34TH ANNUAL HOLIDAY CONCERT

December 6, 2009 at 3:00pm

Gordon Center for the Performing Arts
Owings Mills, Maryland

Mairee Pantzer, Artistic Director

Patricia McKewen Amato, Accompanist



100 East Pennsylvania Avenue, Suite 202 ~ Towson, MD 21286
410-494-1480 ~ www.ccmsings.org

*Program design by Kathrine Forster Kuo
Need friendly design and illustration? Email katkuo.design@gmail.com*

Kimberly,
Sing Beautiful...Have a GREAT concert!
We send lots of hugs and kisses,
Love, Oma & Opa



**Congratulations
Nick Auen!**
We all love to hear you sing
(even Atlas)!

Julian,
Have a wonderful concert.

With much love,
Mom, Dad and Hannah

Welcome to Children's Chorus of Maryland's 34th Annual Holiday Concert, *Be of Good Cheer!* We hope that this afternoon's collection of rollicking wassail songs delivered by the voices of children will cheer your spirit and ease your worries. Prepare your heart for a lively afternoon!

Several of the pieces on the program today are what are known as "wassails," that is, songs that people used to sing as they traveled from door-to-door during winter months. Stephen Hatfield describes the purpose of wassails in his program notes for *Old Fox Wassail*: "... not to honor any particular holiday, but to call down blessings and charms to ensure good crops, big flocks, and healthy children." Listen for these blessings in the Concert Choir's performance of *Here We Come A-Wassailing* ("Love and joy come to you..."), in a select ensemble's performance of *Old Fox Wassail* ("...we wish you, send you a happy new year"), and in Ralph Vaughan Williams' arrangement of *Gloucestershire Wassail* as all CCM choristers will call down blessings on the Master's horse, ox, pie, and maid.

You will notice that the same cheerful spirit found in wassail songs is scattered throughout the concert. Concert Choristers will begin with a text of praise to God from the liturgy of the Mass as they perform Antonio Vivaldi's *Laudamus Te*. The Lyric Choir will perform Dr. Betty Bertaux' lively arrangement of *Esa Noche Yo Baila*, an Afro-Bolivian song. Treble Choristers will celebrate Hanukkah festivities in *Hi Ho for Hanukkah!* And the Concert Choir will perform a unique variation of *Good King Wenceslas* by P.D.Q. Bach, *Good King Kong*; be prepared for a chuckle!

For many, and perhaps for you as well, the past year has been an exceedingly difficult one. While these challenges will not disappear instantaneously, we trust that our songs will bring joy and hope to your spirit. We hope that our gift of song will encourage you. Our holiday wish for you is this: *Be of Good Cheer!*

Mairée Panty

Artistic Director

**BE
OF
GOOD
CHEER!**

Audra,

How proud you must feel performing in your new role as a
Beginner 3! We are quite proud of you and love you.

Daddy & Mom

Way to go, Katie!

We are so proud of you and your friends at CCM!

Love, Mommy, Daddy and Josie

India and Reuben

We love you and your beautiful singing.

Love from Mum, Dad, Rory, Pip, Geico, and Sunny

IN HONOR AND MEMORY OF ALL THAT HAVE SERVED
AND ARE SERVING TO PRESERVE OUR FREEDOM.

**THE TASK AHEAD OF YOU,
IS NEVER AS GREAT
AS THE POWER BEHIND
YOU.**



ALL GAVE SOME, SOME GAVE ALL.



2009 - 2010 ROSTER

CONCERT CHOIR

Angelo Badolato
Moran Beidleman
Elana Bell
Emily Bishop
Molly Bishop
Anna Brashears
Rose Casciero
Lee Clum
Danielle Farmer
Samantha Farmer

Liana Garrett
Kellie Green
Kimberly Gregory
Anna Hashmi
Kirsten Hines
Olivia Hurley
Alyssa Ince
Lily Kowalczyk
Austin Nikirk

Veronica Page
Collin Power
Jamila Purnell
Shaelyn Rhinehart
Julia Scheinberg
Gabriella Studt
Zoe Valentino
Mari Wetherington
Jenna Williams
Kristen Zajdel

LYRIC CHOIR

Kristina Anastasiades
Nick Auen
Julian Baron
Samuel Bishop
Genevieve Block
Shea Boecker
Crystal Cheng
Nina Feliciano
Frances Garrett
Christine Gary

Abigail Hines
Madison Johnson
Otto-Reuben Johnson
Phyllis Lehman
Abby Levine
Abigail Lo
Rebecca Margolis
Ariona Mayo
Kendall McCoach
Zinna Moore
Amy Nackeran

Ellen Nikirk
Abby Pepin
Austin Nikirk
Madeline Pepin
Eve Plank
Christopher Plimpton
Sydney Siegmeister
Marissa Thobe
Kristina Waymire
Gretchen Young

continued on page 6



2009 - 2010 ROSTER

continued from page 5

TREBLE CHOIR

Eseose Azobua	Katie Halushka	Annelise Molavi
Emma Balkoski	Mattias Hanchard	Julia Parker
Alyse Campbell	Noelle Hargrave	Giulia Parsons
Katie Connors	Addie Holden	Meredith Pepin
Madison Rose Coté	Marianne Howard	Jesse Plank
Shawnee Couch	Sasha Howard	Alyssa Platt
Ariel del Pozzo	Asha Johnson	Abraham Plimpton
Campbell DiCarlo	India Johnson	Magdalena Plimpton
Ehren Dietrick	Naomi Kaufman	Josiah Powe-Walsh
Maija Dixon	Sophia Kessenich	Hailey Russo
Vyann Eteme	Leon Kowalczyk	Layla Sartipy
Annie Fairall	Audra Lane	Samuel Schuler
Celia Fausnet	Kathleen Lee	Emma Shannon
Whitney Flickinger	Mateo Lopez-Castro	Grace Vaeth
La'Mya Flowers	Maryanne Macdonald	Elizabeth Volpe
Toby Garver	Michael Martin	Meghan Ward
Alexandra Goles	Olivia Merryman	Bernarr Williams
Isabella Grass		Madison Williams

Julia,

What a year so far!

You make us more and more proud every moment.

Love always from your family (and, of course, Misty)



STAFF

RAMONA GALEY

General Director

MAIREE PANTZER

Artistic Director

DR. BETTY BERTAUX

Founder

Director, Sing for Success!

CINDY GADDIS

Operations Manager

ANDREA BURGOYNE

Concert Manager

MARTHA TALBOTT

Administrative Assistant

FACULTY

SUZANNAH BAUER

Teacher

Children's Chorus of Maryland Graduate
Teacher and Center Director, Music Together®
Music Specialist, Our Lady of Hope/St. Luke & St. Rose Schools
B.M. Vocal Performance, Eastern University
Kodály Certification, American Kodály Institute

KATIE COLE

Teacher

Music Specialist, Carroll County Public Schools
Carroll County Children's Chorus MusicMaker I Director
B.S. Mus. Ed., Towson University
Kodály Certification, The Hartt School of Music

LYNDSAY DAVIES

Teacher

Music Specialist, Harford County Public Schools
B.S. Mus. Ed., Grove City College
Kindermusik Instructor, Joyful Sounds School of Music
Kodály Certification, American Kodály Institute

continued on page 9

**Она поет... и мне сдается,
Что чистых серафимов хор
Вдоль горних облаков несется,
Что мне их слышен разговор.**

М. Ю. Лермонтов

Eric J. Lane, Psy.D.

Licensed Psychologist

Psychological evaluations and psychotherapy for
children and adolescents

1104 Kenilworth Dr., Suite 302
Towson, MD 21204

443-280-2916
410-377-4844 fax

www.ericjlane.com
ericlane04@comcast.net

FACULTY

continued from page 7

EMILY HINES

Teacher

Music Specialist, Montgomery County Public Schools,
Primary Grades and Special Education
M.M.Ed., Virginia Commonwealth University
B.A. Music, College of William and Mary in Virginia
Kodály Certification, The Hartt School of Music

TASHA MAGLOCCI

Teacher

Music Specialist, Howard County Public Schools
B.S. Mus. Ed., Indiana University of Pennsylvania
M.M. Music, Indiana University of Illinois
Kodály Certification, American Kodály Institute

LAUREN McDOUGLE

Teacher

Music Specialist, Charles County Public Schools
B.M. Mus. Ed., Bowling Green State University
Orff-Schulwerk Level I, Eastman School of Music
Kodály Level II, American Kodály Institute

Alyssa,

we are so very proud of you!
You continue to amaze us with your talent and poise.

Love, Daddy, Mommy, Cody and Ashley

Austin and Ellen –

You make the holidays musical! Keep singing.
Love, Mama and Daddy

Jamila –

We are thrilled and proud to see you in your 10th Holiday
Concert with CCM!
Love, Mom and Dad

Giulia –

We love you so much and enjoy your music! You are the best!
Love, Mommy, Daddy, and Sophia

Perform!

January 22, 2010



Visual, Auditory, Written. Come and enjoy good coffee, good people, and every variation of art you can think of. If you or someone you know is an artist, musician, poet, writer, etc., come out and display or perform your art for free to an audience! Reservations encouraged, but no preregistration is required, just come and sign up. There will be plenty of coffee to go around, as well as some good food, and even a backup band or CD player for accompaniment. **FOR FREE!** Come and meet some new people and join in the fun!
7:00 PM to finish.

Chestnut Grove Presbyterian Church, 3701 Sweet Air Road, Phoenix, MD 21131
410-592-9121



BOARD OF DIRECTORS

Betty Bertaux, Acting Secretary
Children's Chorus of Maryland Founder; Director, Sing For Success!

Yvette C. Brown, Secretary
Vice President, Bank of America

C. Alex Calderon, Vice Chairman
Corporate Financial Planning and Analysis, Erickson

Ramona Galey, Acting Treasurer
General Director, Children's Chorus of Maryland

Sheryl D. Parks, Treasurer
Associate Professor, Community College of Baltimore County

Anna Marie Sohn, Chairwoman
Manager of Advertising, Merchandiser Newspaper

Thomas Webb, Esq.
Attorney At Law

ADVISORY BOARD

Patricia McKewen Amato
Accompanist
Children's Chorus of Maryland

Herbert Goldman, Esq.
*Gordon, Feinblatt, Rothman,
Hoffberger & Hollander, LLC*

Hilda Perl Goodwin
Benefactor

Nancy Grasmick, Ph.D.
State Superintendent of Schools
Maryland Department of Education

Ronald Gretz
Artistic Director
Annapolis Opera Company

Thomas Hall
Music Director
Baltimore Choral Arts Society

Dr. Miriam Pauls Hardy
Philanthropist

Dr. Margery Lowens
*Musicologist and noted authority on the
music of Edward MacDowell*


John W. Lyon
President
Excel Institute

Edward Polochick
Music Director
Concert Artists of Baltimore

Elam Ray Sprenkle
*Professor of Music History,
Composition, and Theory*
Peabody Conservatory

Allene O. Sullender
Philanthropist

Barry Tuckwell
*Conductor, Clinician, Horn Soloist,
Distinguished Visiting Faculty*
Peabody Conservatory



BE OF GOOD CHEER!

PROGRAM

CONCERT CHOIR

- Wassail Song* Traditional English Carol
Arranged by Tom Johnston
- Laudamus Te* Antonio Vivaldi (1678-1741)
from *Gloria*
- Evening Song* Zoltán Kodály (1882-1967)
- October's Party* Elam Sprenkle
George Cooper from *A Midge of Gold*

INTERLUDE

- Variations on* Traditional English Carol
Here We Come A-Wassailing Arranged by Katie Cole,
Reuben Johnson, and Tasha Maglocchi
Katie Cole and Tasha Maglocchi, Flutes

LYRIC CHOIR

- Stopping by Woods on a Snowy Evening* Vera Kistler
Robert Frost
Katie Cole, Flute ~ Abby Hines, Sleigh Bells
- Kindle the Lights of Hanukkah* Linda Marcus and
Ruth Elaine Schram
- Esa Noche Yo Baila* 17th Century Bolivian
English text by Tina Chancey Arranged by Betty Bertaux
and Betty Bertaux
Jeff Auen, Guitar ~ Nina Feliciano, Guiro ~ Frances Garrett, Congas
Abigail Hines, Claves ~ Tasha Maglocchi, Bongos ~ Kendall McCoach, Maracas
Madeline Pepin, Cowbell ~ Ginger Turner and Steven Bailey, Trumpets

INTERLUDE

- Here We Come A-Wassailing* Traditional
Arranged by Ramona Galey
Mairee Pantzer, Soprano
Ginger Turner and Steven Bailey, Trumpets

TREBLE CHOIR

- Dormi, Dormi* Italian Carol
Arranged by Mary Goetze
- I Heard a Bird Sing* Cyndee Giebler
Katie Cole, Flute
- Hi Ho for Hanukkah* Betsy Jo Angebrannndt
Jeff Auen, Guitar

INTERMISSION

CONCERT CHOIR

- Wolcum Yole* Benjamin Britten (1913-1976)
from *Ceremony of Carols*
- Mi Ze Hidlik* Traditional Jewish Song
Arranged by Valerie Shields
Tasha Maglocchi, Flute
- Old Fox Wassail* Traditional English
Arranged by Stephen Hatfield
Moran Beidleman, Elana Bell, Emily Bishop, Anna Brashears,
Samantha Farmer, Kellie Green, Kimberly Gregory, Amina Hashmi,
Veronica Page, Jamila Purnell, and Gabriella Studt
- Mary's Little Boy Child* Jester Hairston
Arranged by Valerie Shields
Alec Bersch, Congas ~ Ginger Turner and Steven Bailey, Trumpets
- Good King Kong* P.D.Q. Bach (1807-1742)?
Reverently edited by Professor Peter Schickele

continued on page 14

PROGRAM

continued from page 13

INTERLUDE

Fantasia on The Old Fox Wassail Arranged by Betty Bertaux
With Inspiration from Stephen Hatfield
Ginger Turner and Steven Bailey, Trumpets

COMBINED CHOIRS

Gloucestershire Wassail Traditional English Carol
Arranged by Ralph Vaughan Williams (1872-1958)
Katie Cole and Tasha Magloci, Flutes

*Please join us for a light reception in the lobby
immediately following the concert.*



Look around you today—

You will see many people sporting various CCM pins. The oval, "Sponsor" pins are given to honor those people who have made an extraordinary financial contribution to CCM, of five hundred dollars or more in any one year. CCM could not exist without their generosity.

Some of our volunteers will be wearing pins earned for service well beyond that required of all CCM families. Many of these volunteers have given dozens, even hundreds of extra hours to CCM. No concert, no fundraiser, no newsletter, no tour, no CCM event could be produced without the generosity of our volunteers.

Finally, you will see many pins proudly worn by our choristers. Every pin represents a period of extraordinary commitment, on the part of the student and the family, to braving the elements, overcoming illness, and laying other opportunities aside, in order to achieve exemplary attendance at CCM's classes and rehearsals. Good attendance is the backbone of a polished performance, and while perfect and near-perfect attendance isn't always possible, we honor those students who accomplish it. And look how many have accomplished it again and again!

Taken together, CCM's pins tell the story of a tremendous commitment—of time, effort, funds, determination and talent—all of which come together to produce today's concert. If you're reading this program, chances are that some of that commitment has come from you. So thank you, to all who have made today's concert possible. We couldn't have done it without you!



LAUDAMUS TE

Laudamus te.	<i>We praise thee.</i>
Benedicimus te.	<i>We bless thee.</i>
Adoramus te.	<i>We adore thee.</i>
Glorificamus te.	<i>We glorify thee.</i>

OCTOBER'S PARTY

October gave a party;
The leaves by hundreds came
The Chestnuts, Oaks, and Maples,
And leaves of every name.
The Sunshine spread a carpet,
And everything was grand,
Miss Weather led the dancing,
Professor Wind the band.

The Chestnuts came in yellow,
The Oaks in crimson dressed;
The lovely Misses Maple
In scarlet looked their best;
All balanced to their partners,
And gaily fluttered by;
The sight was like a rainbow
New fallen from the sky.

Then, in the rustic hollow,
At hide-and-seek they played,
The party closed at sundown,
And everybody stayed.
Professor Wind played louder;
They flew along the ground;
And then the party ended
In jolly "hands around."

continued on page 16

TEXT & TRANSLATIONS

continued from page 15

STOPPING BY WOODS ON A SNOWY EVENING

Whose woods these are I think I know.
His house is in the village though;
He will not see me stopping here
To watch his woods fill up with snow.

My little horse must think it queer
To stop without a farmhouse near
Between the woods and frozen lake
The darkest evening of the year.

He gives his harness bells a shake
To ask if there is some mistake.
The only other sound's the sweep
Of easy wind and downy flake.

The woods are lovely, dark and deep.
But I have promises to keep,
And miles to go before I sleep,
And miles to go before I sleep.

ESA NOCHE YO BAILA

Esa noche yo baila,	<i>Tonight I am dancing</i>
con Maria lucume,	<i>And Marylou with me</i>
hasta sol que amanece	<i>Until the sun comes up</i>
plo mi Dios que sa acuya	<i>For my God who is in the cradle.</i>
esa gente comen sa	<i>All these people are with me</i>
aunque pela vuesa fe.	<i>All in good faith</i>
	<i>("even though...good faith")</i>
Su hichito ya nace.	<i>This little Son is now born.</i>
Poca poca nobela	<i>Little by little we will see</i>
	<i>(or "They will see us")</i>
nacie con Batulume	<i>Born with Bartholomew</i>
puero nega en bona fe	<i>But they deny good faith</i>
el mandame a mi canta.	<i>He asks me to sing Him a song.</i>
Yo canta hasta amanece.	<i>I will sing for Him until dawn.</i>
Su hichito ya nace.	<i>This little Son is now born.</i>

TEXT & TRANSLATIONS

DORMI, DORMI

Dormi, dormi bel bambin.	<i>Sleep, O sleep, my lovely child.</i>
Re divin, Re divin.	<i>King divine, King divine.</i>
Fala nanna fantolino.	<i>Close your eyes and sweetly slumber.</i>
Re divin, Re divin.	<i>King divine, King divine.</i>
Fala nanna fantolino.	<i>Close your eyes and sweetly slumber.</i>

Fa-la-la...

WOLCUM YOLE

Wolcum, Wolcum, Wolcum be thou hevenè king,
Wolcum Yole! Wolcum, born in one morning,
Wolcum for whom we sall sing!
Wolcum be ye, Stevene and Jon,
Wolcum, Innocentes every one,
Wolcum, Thomas marter one,
Wolcum be ye, good Newe Yere,
Wolcum, Twelfth Day both in fere,
Wolcum, seintes lefe and dere,
Wolcum Yole, Wolcum Yole, Wolcum!
Candelmesse, Quene of bliss,
Wolcum bothe to more and lesse.
Wolcum, Wolcum, Wolcum be ye that are here,
Wolcum Yole, Wolcum alle and make good cheer,
Wolcum alle another yere, Wolcum Yole, Wolcum!

MI ZE HIDLIK

Mi ze hidlik neirod dakim,	<i>Who is the one who has lit</i>
Kakochavim barom?	<i>Thin candles like stars on high?</i>
Yodim gam tinokot rakim,	<i>Even tender babes know</i>
Ki Chanuka hayom.	<i>That Chanuka is here today.</i>
Kol near aliz, kol near chaviv	<i>Each merry candle, each dear candle</i>
Doleik, romeiz, notseits.	<i>Burns, winks, shines.</i>
Hatinokot omdim saviv	<i>The babes stand around</i>
Velasimcha ein keits.	<i>And joy has no limit.</i>

continued on page 18

TEXT & TRANSLATIONS

continued from page 17

GLOUCESTERSHIRE WASSAIL

Wassail, Wassail all over the town,
Our bread it is white and our cider is brown,
Our bowl it is made of the white Maple tree;
In the Wassail bowl we'll drink unto thee.

Here's a health to the horse and to his right eye.
Pray God send our Master a good Christmas pie,
A good Christmas pie as ever I did see;
In the Wassail bowl we'll drink unto thee.

Here's a health to the ox and to his broad horn.
Pray God send our Master a good crop of corn,
A good crop of corn as ever I did see;
In the Wassail bowl we'll drink unto thee.

Come butler, come fill us a bowl of the best,
Then I pray your soul in heaven may rest,
But if you do bring us a bowl of the small,
May the devil take butler, bowl and all!

Then here's to the maid in the lily white smock,
Who tripped to the door and slipped back the lock,
Who tripped to the door and pulled back the pin,
For to let these jolly Wassailers walk in.

GUEST PERFORMERS

Children's Chorus of Maryland warmly welcomes our guest performers in this afternoon's concert. We are grateful for their collaboration and artistry!

Jeff Auen currently operates the Baltimore Guitar School in Hunt Valley, MD. (For more information, visit baltimoreguitarschool.com.) He has performed in the comedy/musical duo "Change Of Pace" since 1982. Mr. Auen also produces and promotes concerts in the Baltimore area, primarily showcasing world-class guitar players. His son, Nick, sings in the Lyric Choir.

Steven Bailey is currently a senior trumpet performance major at Towson University with a minor in computer science. He has been playing trumpet for over 14 years and has experience in multiple types of settings, including orchestra, brass quintet, jazz combos, and musical pits. Performing for RWS and Associates Entertainment Inc. in Summer 2008 and WJS Productions in Summer 2009, he performed in full-time in bands in Dutch Wonderland and Knoebels Amusement Resort, respectively. He also placed 3rd in the Towson University Concerto Competition in Fall 2008. He is a member of the International Trumpet Guild, and has performed at the 2006 and 2009 conferences.

A proud Baltimore native, *Alec Bersch* has studied percussion in Baltimore and Haiti. Currently, he is a student at Towson University, and divides his time between studying in Baltimore and living and working at an orphanage in Haiti.

Virginia "Ginger" Turner completed her undergraduate degree at New Mexico State University and completed a Master's Degree in trumpet performance at Arizona State University. For the past 19 years, Turner has been stationed at Fort Meade, just outside of Washington, D.C. She currently serves as The US Army Field Band's Concert band Detachment Leader, achieving the highest enlisted rank possible.

Special thanks to *Ms. Katie Cole* and *Ms. Tusba Magloci*, current CCM teachers, for their outstanding musical contributions to this afternoon's concert.



wishes to thank the following sponsors
for generous corporate support
and donation of door prizes
for today's concert.

THE BARON FAMILY/ALLSTATE LEASING

THE CLUM FAMILY/
WISTERIA SAGE FLORAL ARTS

THE DiCARLO AND PLANK FAMILY/
UNDER ARMOUR

BULLWINKLES RESTAURANT

KIRCHMAYR CHOCOLATIER

CINDY GADDIS

LOYOLA BLAKEFIELD
AND JENNIFER MILLER



CONCERT DONORS LIST

2009 - 2010 SEASON

as of November 28, 2009

Children's Chorus of Maryland wishes to thank the following donors
for their generous support of our programs and for their dedication
and commitment to our children. We can't do it without you!

DIRECTOR'S CIRCLE (\$10,000 - \$24,999)

Dana DiCarlo & Scott Plank
Rachel Geisz-Loetell
Miriam Hardy
Marguerite Herman
Barry & Phyllis Miller
Allene Sullender

CONDUCTOR'S CIRCLE (\$5,000 - \$9,999)

Baltimore County Commission on Arts & Sciences
Patricia Cannella
Stephanie Davis
Joseph Loetell
Dr. Margery M. Lowens
Maryland State Arts Council
David & Stacy Plimpton

PATRONS (\$1,000 - \$4,999)

Jim & Connie Glover
John Hancock Financial Services
Kelly Oh
St. Andrews Christian Church
Cory Williams

continued on page 22

CONCERT DONORS LIST

continued from page 21

SPONSORS (\$500 – \$999)

Betty Bertaux
Christina Feliciano
Ramona Galey
Kevin & Carrie-Ann Platt
Jack & Mary Weller

CONTRIBUTORS & SUSTAINERS

(\$250 – \$499)

Donna & James Farmer
David Power

(\$100 – \$249)

Nancy Anastasiades
Mary Azrael
Kristen Brooks
Elizabeth Garrett
Barbara Goldberg
Marilyn Herd
Donald Hines
Vicki Lucas
Melaleuca, Inc.
Michael Meyers
Howard Miskimon
John O'Hara
Mary Riordin
Meghan Smith
Anna Marie Sohn
Melo Vaeth
Amy Valentino

(\$50 – \$99)

Robert Buck
Tracey Dockman
Carla Finkelstein
Herbert & Harriett Goldman
Tom Hall
Marc Halushka
Mary Jeanne Mullen
Allison Nikirk
Melinda O'Neal
Cheryle Oshman Blunt
J. Karl Sachs
Charles & Ruth Spivak
John & Kathryn Watt
Nancy White

(up to \$49)

Margaret Cassady
William Dombrowski
Letitia Elliott
Susan Goetze
Barbara Hargrave
M. Kathleen McGuire
Marsha McLaughlin
Catherine Nelson
Lisa Parsons
Catherine Power
Layla Sartipy
Merrill H. Schlicker
Karen Smith

ACKNOWLEDGEMENTS

Children's Chorus of Maryland is funded by an operating grant from the Maryland State Arts Council, an agency dedicated to cultivating a vibrant cultural community where the arts thrive.

This performance is made possible in part through sponsorship of the Baltimore County Executive, County Council, and the Commission on Arts and Sciences.

Children's Chorus of Maryland wishes to thank:

- ~ Elana Bell for her excellent coaching on Hebrew pronunciation!
- ~ Tom Casciero for his creative insights and help with choreography!
- ~ CCM Parents and community volunteers for their generous service.
- ~ CCM Faculty for their excellent instruction, musicianship, and caring respect for children.
- ~ The Board of Directors for their time, devotion, and guidance.
- ~ Numerous Donors who have faithfully supported CCM's operation and development.

CONCERT VOLUNTEERS

<i>Box Office</i>	Joanne Power, Maurcen Gary
<i>Concert Parents</i>	Allison Nikirk and Jamie Perry, Co-Coordina-tors Abbe Creaney, Kate McGuire, Diana Molavi
<i>Crowd Management</i>	Joyce Duncan, Gretchen Maxwell, Barbara Parker, Lisa Parsons, Marge Siegmester, Pam Ward
<i>Equipment</i>	Wendy Scheinberg
<i>Flowers</i>	The Clum Family, Amy Lamp
<i>F.I.P.</i>	Betsy and James Garrett, Co-Coordina-tors
<i>Instrument Wranglers</i>	Emma Cervone, Natalie Dixon
<i>Merchandise</i>	Laura Boecker
<i>Photography</i>	Renee Bishop, Beth Dietrick, Annette Heimlich, Susan Martin, Amelia Schuler
<i>Reception</i>	Donna Farmer and Yan Jiang, Co-Coordina-tors
<i>Stage Management</i>	Quint Gregory, Wendy Kaufmann, Edwin Lo, Tracy Lo
<i>Tour Fundraising</i>	Lisa Gregory, Coordinator
<i>Troubleshooting</i>	Betsy Garrett
<i>Uniforms</i>	Sarah Johnson
<i>Videographer</i>	Maurcen Martin
<i>Web Design</i>	Amelia Schuler
<i>Writing Assistance</i>	David Page



2009 - 2010 SEASON

November 7, 2009, 3:30pm

1st Annual Scholarship Benefit

First Christian Community Church ~ 5802 Roland Avenue, Baltimore, MD

December 6, 2009, 3:00pm

34th Annual Holiday Concert – Be of Good Cheer!

Gordon Center for Performing Arts ~ 3506 Gwynnbrook Avenue,
Owings Mills, MD

December 13, 2009 – 2:30 & 4:00pm

Bookfair: Fundraiser for 2010 Touring Choir

Barnes & Noble ~ 1819 Reisterstown Rd, Baltimore, MD

March 12, 2010 at 8:00pm & March 14, 2010 at 3:00pm

Tosca with Annapolis Opera Company

Maryland Hall for the Creative Arts ~ 801 Chase Street, Suite 304, Annapolis, MD

March 14, 2010, 3:00pm

Sundays at Central Concert Series

7300 York Road, Towson, MD

April 25, 2010 ~ 3:00pm

34th Annual Spring Concert – Simply Delicious!

Gordon Center for Performing Arts ~ 3506 Gwynnbrook Ave., Owings Mills

May 2, 2010 ~ 3:00 pm

Charlestown Retirement Concert Series

Charlestown Retirement Community ~ 711 Maiden Choice Lane, Catonsville

July 1, 2010 ~ 3:00 pm

Niagara Falls Send Off Concert

July 6-10, 2010

Tour to Niagara Falls

Schedule is subject to change.

SpecPrint

www.specprint.com

PERSONALIZED CALENDARS

**Perfect for the office,
home or a gift.**

YOU SUPPLY THE PHOTOS AND
WE DO THE REST
\$12.00 EA

ORDER MORE THAN 1 OF
THE SAME CALENDAR
\$10.00 EA ADDITIONAL

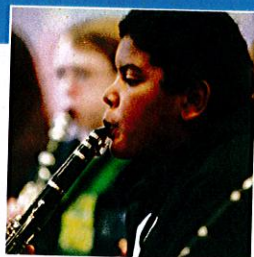
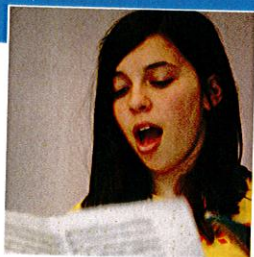
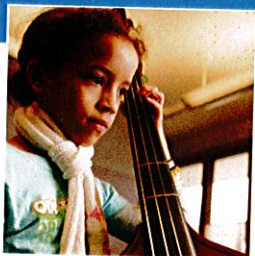
SPECIALIZING IN:

- COLOR COPIES
- WIDE FORMAT COLOR & B/W
- DIGITAL IMAGING - SCANNING
- RAFFLE TICKETS
- BUSINESS CARDS & LETTERHEAD
- POSTCARDS
- NEW CORPORATION LISTINGS
- PROPERTY/TAX MAP &
ASSESSMENT DATA BOOKS
- SPECIALIZED LISTS & SEARCHES

7R AYLESBURY ROAD
TIMONIUM, MD 21093
PHONE: 410-561-9600
FAX: 410-561-9051

WALDORF

SCHOOL OF BALTIMORE



An education that opens a world of opportunities

The Waldorf School of Baltimore offers a strong academic program that produces young adults of vision, talent, and skill. With our superb lower, middle, and upper school – plus our acclaimed early childhood program – Waldorf offers a complete educational experience.

Now accepting applications for September 2010. Call Bonny Mochan at (410) 367-6808, ext. 203 or visit our award-winning website.

www.waldorfschoolofbaltimore.org